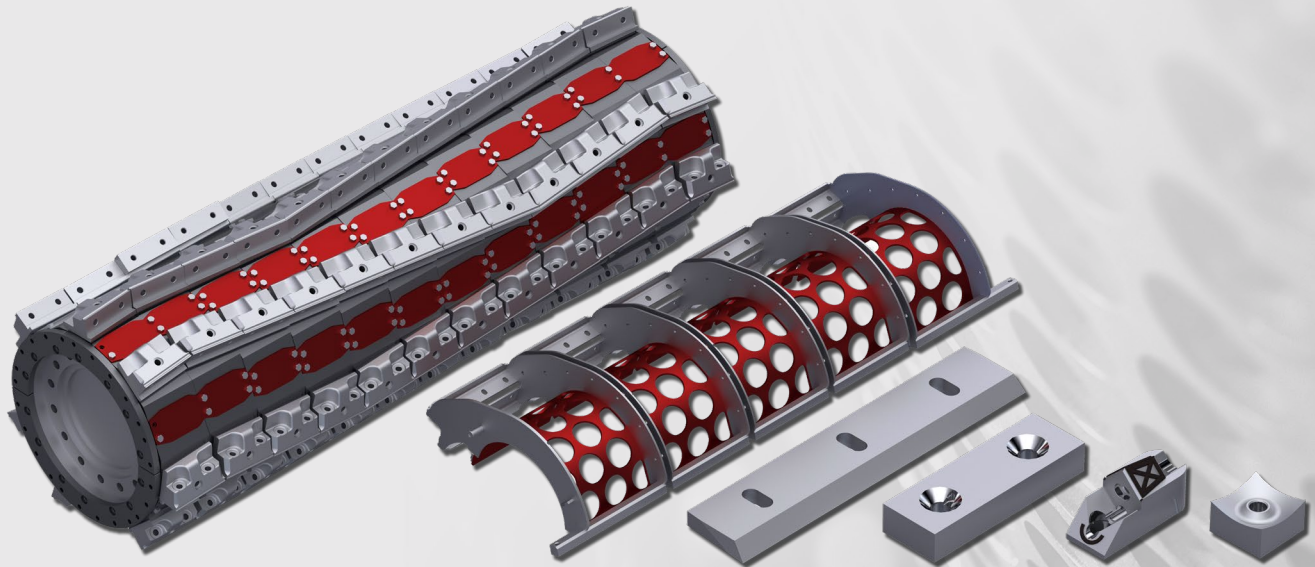


CUTMETALL®

THE SHARPER CHOICE



KNIVES, SCREENS & MORE

Innovative Wear Part Solutions for Your
Shredder and Granulator

 www.CutMetall.com

YOUR COMPETENT AND RELIABLE PARTNER

The **CUTMETALL group** is a leading manufacturer and distributor of industrial knives, screens, spare and wear parts as well as complete machine assemblies for the recycling and shredding industry.

Since 1996, we have been creating solutions that enable our customers in the size-reduction industry to shred the respective input material, work process-optimized and efficiently, through high quality products, customer-oriented services and expert consulting.

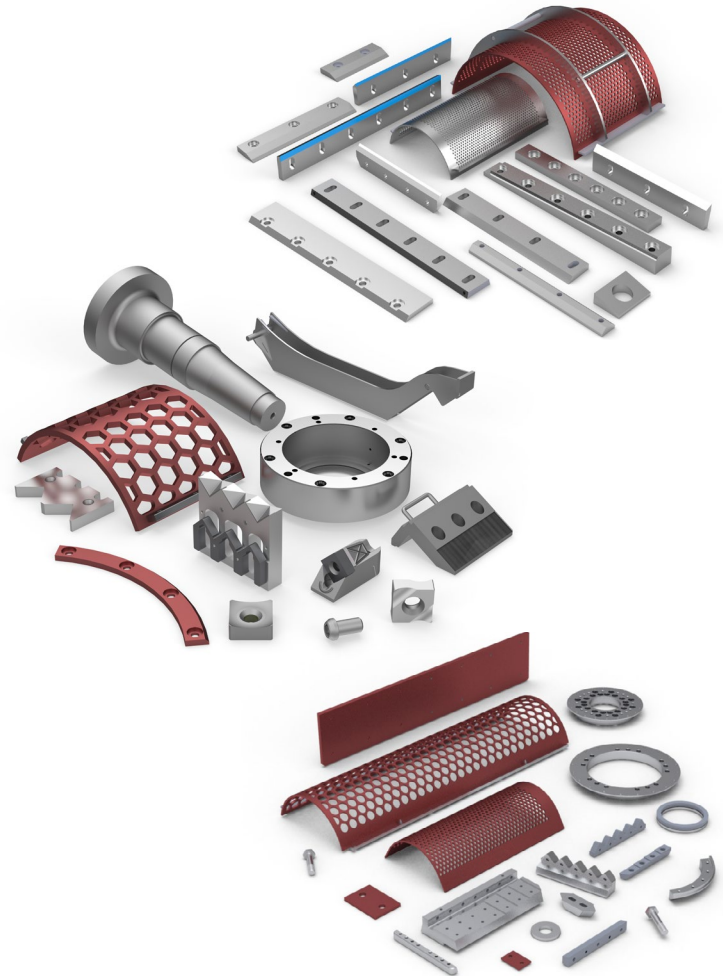
As a full-range supplier with the highest market coverage we provide engineered process-optimized spare parts and systems for over 50 shredder and granulator brands.

Our products are durable, economical and precision-designed for individual machines and specific applications:

- **SRF/RDF**
- **TIRE**
- **WEEE**
- **PLASTICS AND FIBRE**
- **PULP & PAPER**

OUR SPARE AND WEAR PARTS FIT MORE THAN 50 OEM BRANDS

- Eldan®
- Lindner®
- Weima®
- Erema®
- Previero®
- Zerma®
- Herbold®
- Vecoplan®
- and many more....



"One-stop shop: screens, blades,
knife pads and fitting material
- CUTMETALL has it all!"

CUTMETALL ADVANTAGE

We provide customers with custom solutions for their specific applications, optimizing the entire recycling process while also increasing efficiency, service life, reducing downtime, all of which contribute to an improved bottom line.

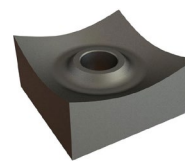
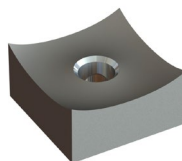
In addition, we offer non-binding, complimentary services, including:

- On-site visits
- Measuring sample parts and components
- Material and hardness testing
- Metallurgical analysis
- Consulting on improved material selection for your wear parts

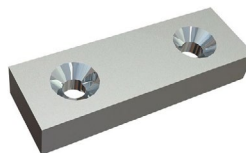
At **CUTMETALL**, we don't simply replicate OEM spare parts. We optimize them and create a better solution; a non-original part so good that OEMs follow in our tracks and modify their parts.

**OEM
PARTS**

**OPTIMIZED BY
CUTMETALL**



**Better machine fit
resulting in
higher throughput**



**Increased throughput and
reduced downtime due to
longer service life (fewer
replacements required)**



**Less downtime, easier
change of knife holders
that can be carried out
without specialist personnel**

**WE HAVE THE RIGHT SPARE PART
FOR YOUR REQUIREMENT.**



MAXIMUM LIFETIME

- Carbide hybrid steel
- Ideal for complex or highly abrasive applications to achieve maximum performance
- Developed and produced in Germany



HIGHLY RELIABLE QUALITY

- Performance tool steel
- Ideal for demanding applications, for safe and continuous operation
- Developed and produced in Germany



STANDARD QUALITY

- Quality tool steel
- Ideal for standard shredding applications, providing the best price
- Developed and quality-controlled in Germany, produced globally

ENGINEERED AND MANUFACTURED IN GERMANY

More than 150 employees process over 1,500 tons of steel at our three German production facilities every year, ensuring the highest possible quality of spare and wear parts for all major machine brands.



CUTMETALL WEBSHOP

Once we created an account for you, the CUTMETALL webshop will automatically be configured with your individual machinery. Ordering parts is hassle-free through:

- 24/7 availability
- Intelligent part search function
- Live inventory levels
- Estimated shipping time
- Save for later list
- Document archive
- App incl. barcode scanner

The screenshot shows the CUTMETALL webshop interface. At the top, there's a navigation bar with 'Wear parts', 'CUTMETALL products', 'Transmission', 'Hardware | Fastening material', and 'SALE %'. A search bar is on the right. Below the navigation bar, there's a 'My items' section with a list of machines: Cumberland, Herbold, Lindner, STF, Vecoplan, and Weima. Each machine has a 'Show machine information' button and an 'Add machine' button. To the right of the machine list, there's a 'My items' section showing two product details for knives. The first product is 'Knife 145x145x47 Premium Line' with a price of \$67.75. The second product is 'Knife 145x145x47 Eco Line' with a price of \$48.52. Both products have a 'Add to basket' button and a 'Save for later' button. The interface also includes a 'Next step' button and a 'Please note' section at the bottom.



shop.cutmetall.com

LOGISTICS

Our highly automated logistics hub stores more than 5,000 components and over 1,000 tons of shredder spare parts. Our inventory is always up-to-date and available online, ready to ship to customers worldwide.



Jakob Mangold

Business Development
Spoken languages: DE / ENG

CONTACT US: 다이나믹인스트러먼트(주)

경기도 군포시 고산로 148번길 17 군포IT밸리 A-1905

Tel: 031. 473. 0040

Email: ettlinger.kr@gmail.com



ISO 9001

Certified
Quality Management System

www.tuvsud.com/ms-cert